



**MAIN CATALOGUE**

## IMPRINT

---

LUNOS Lüftungstechnik GmbH & Co. KG  
für Raumluftsysteme  
Wilhelmstraße 31 · 13593 Berlin  
PO Box 20 04 54 · 13514 Berlin

Phone +49 30 362001-0  
Fax +49 30 362001-89

info@lunos.de  
www.lunos.de

HRA 59773 · PHG: LUNOS  
Verwaltungs GmbH, HRB 83375  
Managing Directors: Ingo Volckmann,  
Andreas Lehmann

Edition: P055657 12.23

Catalogues from previous years become  
invalid with the publication of this catalogue.

Illustrations may be different  
from the original.

# LUNOS HOME VENTILATION SYSTEMS

## Dear customers and business partners,

Fresh air is quality of life - we work more concentrated, sleep better and are generally more relaxed when we are in rooms with fresh air. And it is also a blessing for the property, because mould hardly stands a chance in fresh indoor air.

We at LUNOS have been bringing fresh air into new buildings and renovations for over 60 years. Our ventilation units provide the right amount of fresh air constantly and reliably - and very energy-efficiently. They consume significantly less energy than the market average, are recyclable and packaged in an environmentally friendly way, and require little maintenance. We are not only committed to the sustainable use of resources within our own company. We also support selected local and international promotion and aid projects. In short: LUNOS takes the responsibility that a medium-sized company should.

Despite rapid growth, we remain a family-run company with flat hierarchies and short decision-making paths. At the same time, we have a modern high-bay warehouse and our testing and acoustic laboratories are second to none in the industry.

But it is not only in climate protection that we are at the forefront. Our engineers are constantly working on innovative products - with a great deal of success! For several years now, LUNOS has been the market leader in the field of decentralised residential ventilation. You will find everything about our worldwide renowned decentralised ventilation units and other innovations in this new catalogue.

*Your LUNOS team hopes you enjoy  
reading and discovering*





LUNOS ventilation systems produce hygienic ventilation of living spaces exceeding requirements and bringing a feel-good factor into the house.



# Contents

## General Catalogue



06	<b>Trust in LUNOS</b>	50	<b>Controls</b>
08	<b>Standards &amp; Regulations</b>	51	Radio screen and 5/UNI-RF
09	<b>Ecodesign Directive</b>	52	Smart Comfort, Smart Comfort wireless
		53	5/UNI-FT, 5/UNI-RF
10	<b>Controlled home ventilation</b>	54	TAC
12	Exhaust air system	55	Gesture Control
14	System with heat recovery		
16	Hybrid system	56	<b>Wireless technology</b>
18	Garage ventilation, cascaded ventilation and basement ventilation		
		62	<b>Accessories</b>
20	<b>Products from LUNOS</b>	62	Interior screens
20	Silvento ec	64	External grill
24	AB 30/60	65	Outer hoods
26	RA 15-60	67	Wall mounting
28	Outer wall air vents		
32	Active overflow element ILD	68	<b>Software</b>
34	Ne <sup>xt</sup>	68	Design software
38	Series e <sup>2</sup>	69	Diagnostic software
42	e <sup>90</sup>		
44	LUNOtherm-S	70	References
46	Combination of the 160 series	74	LUNOS worldwide
48	LUNOMAT		

# Trust in LUNOS

Fresh air for generations

LUNOS is a Berlin-based company and market leader for decentralised residential ventilation systems. The company was founded in 1959 and still has its headquarters in Berlin-Spandau. In 2019, LUNOS established a second location in Brandenburg. With a modern high-bay warehouse and new laboratories, the company has prepared itself for the future. LUNOS products are made in Germany and sold in over 36 countries worldwide. In Germany, the products are sold via the three-stage distribution channel.

## LUNOS stands for more than a living climate

Air moves us - we move air. Because fresh air is important for people, as well as for houses and flats. The core competencies of LUNOS are decentralised controlled residential ventilation with and without heat recovery as well as the development and manufacture of energy-efficient fans and external wall diffusers. In addition, LUNOS develops all associated components as well as many other products such as exhaust air fans and facade ventilation systems with concealed ventilation openings.

For decades LUNOS stood for highest quality, functionality and comfort. Ventilation systems, with or without heat recovery, improve the air quality in the house and save energy in everyday life at the same time.

Made in Germany





# Standards & Regulations

## Energy saving regulation & DIN 1946-6

### Energy saving regulation

Whether renovation or new construction: According to the German Energy Saving Ordinance (EnEV), buildings must be leak-proof. This legal regulation always applies, even when renovating old buildings.

LUNOS systems help you to meet the requirements of the EnEV: On the basis of the parameters humidity and temperature the volume flow rate is increased or reduced as required. In this way as much ventilation as necessary but as little as possible is always provided.

Ventilation of internal bathrooms and WCs is the simplest form of domestic ventilation: Only if a high level of thermal insulation of the building is guaranteed and laundry drying does not take place in the apartment may the bathroom ventilator be designed to be switched off. In all other buildings, bathrooms and toilets must be permanently ventilated. This constant exhaust air volume flow in the bathroom also ensures constant, minimal ventilation of the apartment - the first step towards user-independent apartment ventilation!

### DIN 1946-6

The energy saving regulation demands in a sufficient minimum air exchange. Proof can be provided with DIN 1946-6.

The most important tool of this standard is the ventilation concept. It helps to answer a simple question: Is the building adequately ventilated via the building leaks or are additional ventilation measures necessary to ensure a sufficient air exchange rate independent of the user?

If additional measures are necessary, the ventilation systems must be equipped with a user-independent, demand-based control system to meet the requirements of DIN 1946-6. LUNOS offers the suitable products for this.



# LUNOS products are eligible

The energy saving effects of a building are significantly increased through the use of residential ventilation.

Beside the energetic plus points the system provides, it also results in a comfortable and always fresh room. In addition to this the protection offered to the building fabric helps to increase the value of the real estate, offering significant financial advantages.

\* Sound power level: At 70 % of the maximum volume flow according to (EU 1253/1254/2014). The sound power level indicates how "loud" a unit is. The value is independent of the distance.

## Ecodesign Directive

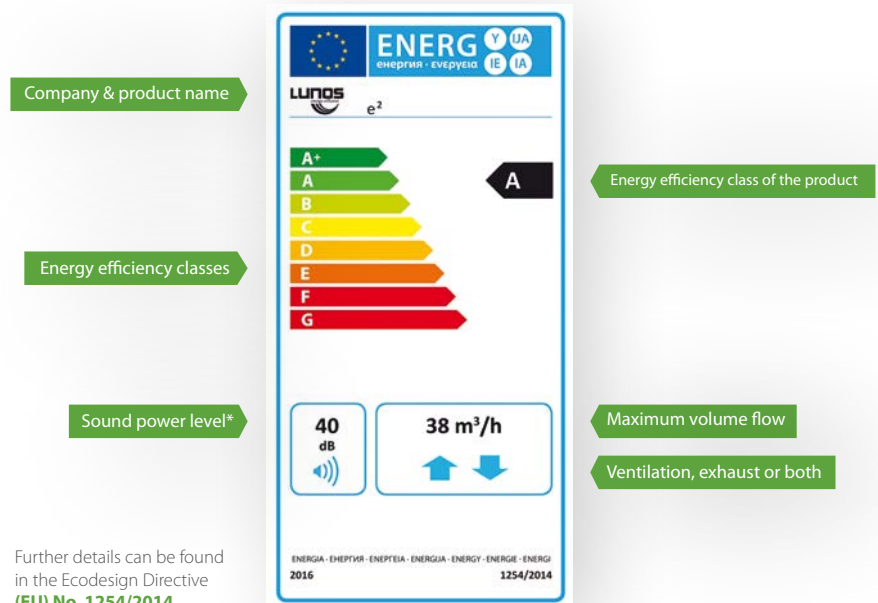


### Ecodesign Directive

Regulations (EU) No. 1253/2014 and (EU) No. 1254/2014 require some ventilation equipment to be classified in energy efficiency classes. They range from A+ (top rating) to G and can be easily read off an energy label.

LUNOS guarantees compliance with all product declaration regulations. All products with heat recovery as well as those devices with a maximum power consumption of more than 30 watts are included in the ventilation devices that require a label.

The Silvento ec from LUNOS is so efficient that its maximum power consumption is 14.5 watts. This means that it does not fall under this requirement and must therefore expressly not be labelled.



# Controlled home ventilation

The concept

## CONCEPT OF VENTILATION SYSTEMS

LUNOS ventilation systems are based on a demand-oriented flow through the entire living area. For efficient ventilation the decentralised fans can be combined to form three different ventilation systems:

The correct system depends on the individual requirements of the project and the habits of the residents.

### 01 EXHAUST SYSTEM

### 02 SYSTEM WITH HEAT RECOVERY

### 03 HYBRID SYSTEM

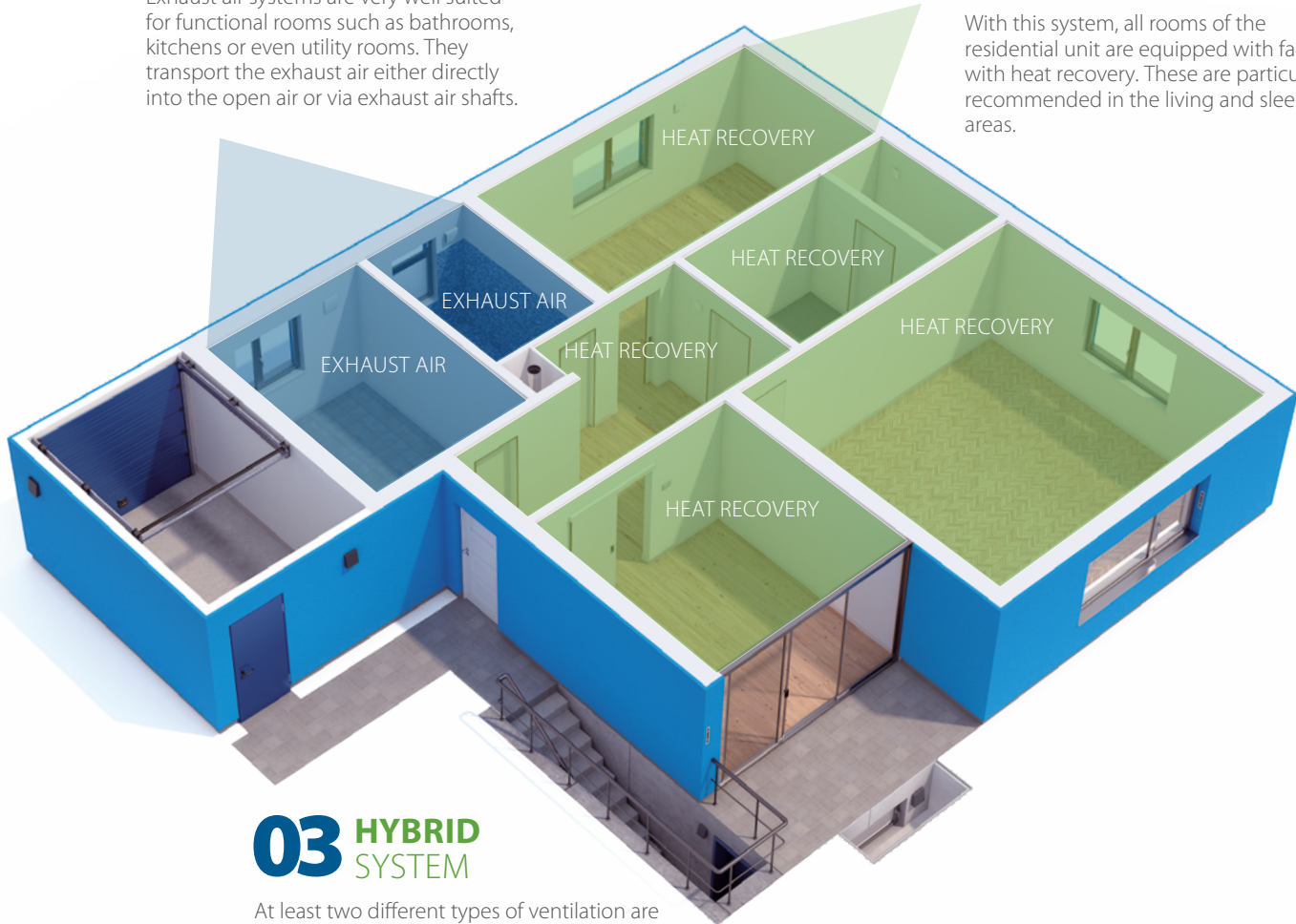
ACCORDING TO DEMAND	Inside comes	Going out	Inside stays	Outside stays
	<ul style="list-style-type: none"> <li>» Fresh, filtered air</li> </ul>	<ul style="list-style-type: none"> <li>» Humid and odour-contaminated air from kitchen, bathroom, WC etc</li> <li>» Pollutants and outgasings from paints, carpets, furniture etc.</li> </ul>	<ul style="list-style-type: none"> <li>» Heat, for systems with heat recovery</li> </ul>	<ul style="list-style-type: none"> <li>» Suspended matter and insects (through filter inserts)</li> <li>» Noise (through soundproofed outer wall elements)</li> <li>» Wind (through wind pressure protection on the outer wall elements)</li> </ul>

## 01 EXHAUST SYSTEM

Exhaust air systems are very well suited for functional rooms such as bathrooms, kitchens or even utility rooms. They transport the exhaust air either directly into the open air or via exhaust air shafts.

## 02 SYSTEM WITH HEAT RECOVERY

With this system, all rooms of the residential unit are equipped with fans with heat recovery. These are particularly recommended in the living and sleeping areas.



## 03 HYBRID SYSTEM

At least two different types of ventilation are used. While the living spaces have fresh air without heat loss thanks to heat recovery units, exhaust air rooms such as the bathroom or kitchen can be ventilated cost-effectively.

# Controlled home ventilation

## Exhaust system

### 01 EXHAUST SYSTEM

Fans in the bathroom, kitchen, toilet or utility room transport the exhaust air either directly into the open air or via exhaust air shafts. The resulting slight negative pressure "pulls" fresh, filtered air through the external wall air diffusers into the living and working areas. Of Particular note: With humidity-controlled domestic ventilation, a system approved by the building authorities, ventilation heat losses can be saved to a considerable extent.

#### Silvento ec

Depending on the application or requirement, any Silvento ec-fan can be used. Available as surface-mounted, flush-mounted or clamp fans.



#### RA 15-60

Radial external wall fan with four ventilation stages and round cross-section. Can be combined with the facade element LUNOtherm.



#### ALD, ALD-SV and ALD-S

Outer wall air diffusers with filter, silencer and, if necessary, wind pressure protection.



#### 9/MRD

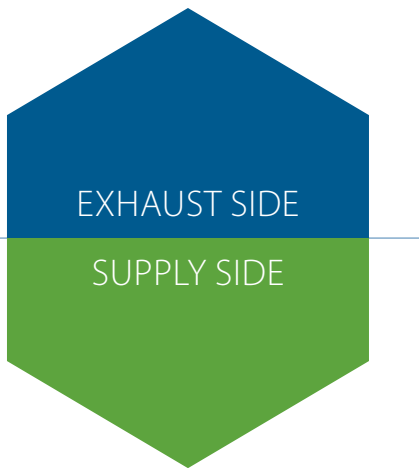
Wall-mounted housing to accommodate the 160 round duct. H x W x D: 240 x 210 x 500 mm



#### LUNOtherm-S and -S+

Facade element, without disturbing ventilation grille on the facade. Can be combined with ALD, ALD-SV or ALD-S.





# Controlled home ventilation

System with heat recovery

## 02 SYSTEM WITH HEAT RECOVERY

With this particularly efficient system, all rooms in the residential unit are equipped with heat recovery units - exactly where they are needed. If you are interested in this type of ventilation, we recommend our proven e<sup>2</sup> series fans.

### Series e<sup>2</sup> A A+

Axial external wall ventilators with regenerative heat recovery for living rooms and bedrooms, can be combined with LUNOtherm-S and -S+.



### e<sup>90</sup> A

Exhaust fan with heat recovery for functional rooms.



### Ne<sup>xt</sup> A

Radial external wall ventilator with recuperative heat recovery for living rooms, bedrooms and functional rooms. Wall ducting via 160 mm round duct.



### 9/MRD

Wall-mounted housing to accommodate the 160 round duct. H x W x D: 240 x 210 x 500 mm



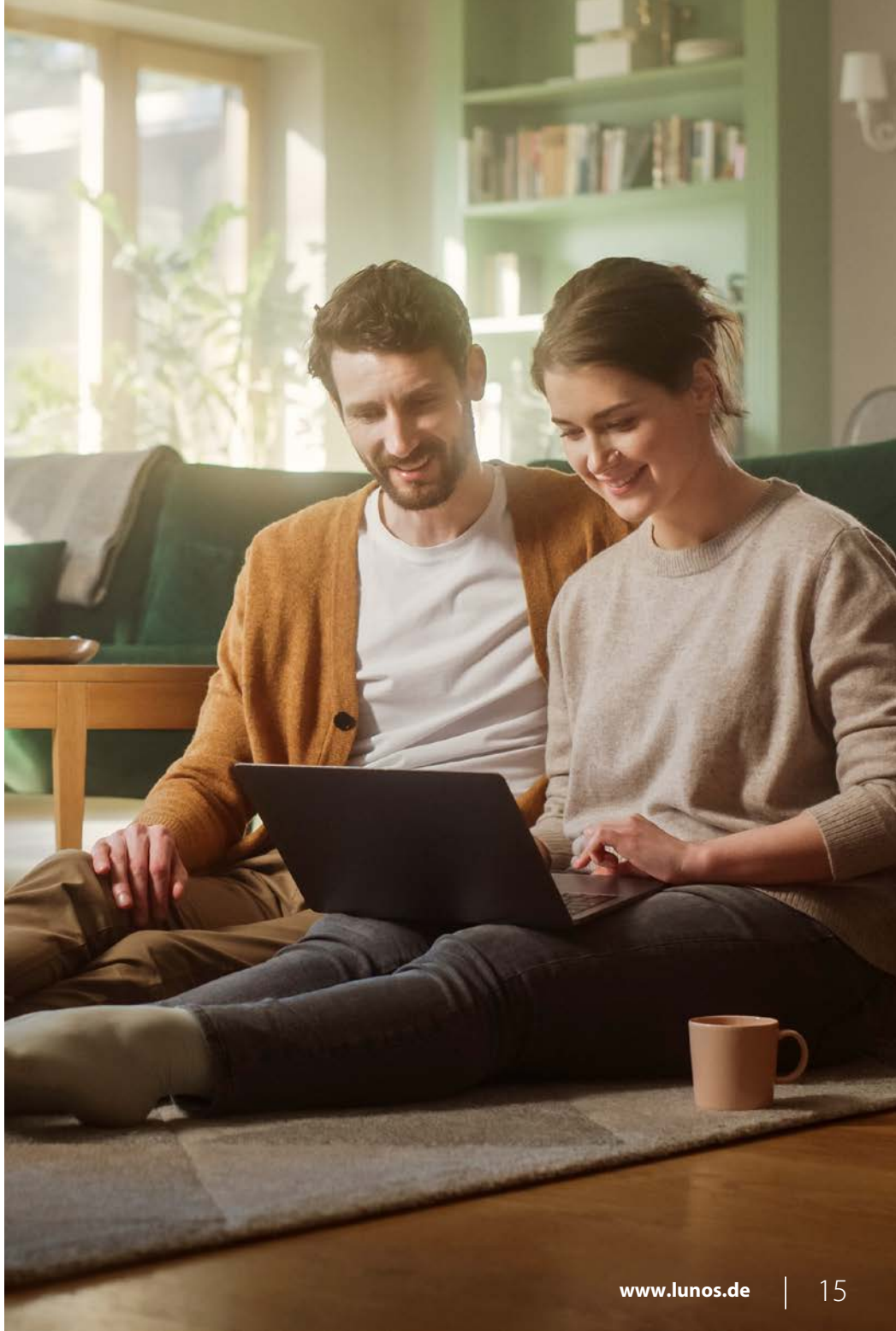
### LUNOtherm-S and -S+

Facade element, without disturbing ventilation grille on the facade.





SUPPLY & EXHAUST  
AIR **WITH HEAT**  
**RECOVERY UNIT**



# Controlled home ventilation

## Hybrid System

### 03 HYBRID SYSTEM

In hybrid systems, at least two different types of ventilation are used together. Combinations of extract air units and fans with heat recovery are particularly effective: While living spaces have constant fresh air without heat loss thanks to heat recovery units, classic extract air rooms such as bathrooms, toilets, kitchens or hot water boilers can be ventilated cost-efficiently as required. For windowless bathrooms and WCs, such an exhaust air unit is even mandatory.

For windowless bathrooms & toilets, the use of exhaust air devices according to DIN 18017-3 is mandatory.

#### Series e<sup>2</sup> A A+

Axial external wall ventilators with regenerative heat recovery for living rooms and bedrooms, can be combined with LUNOtherm-S and -S+.



#### Ne<sup>xt</sup> A

Radial external wall ventilator with recuperative heat recovery for living rooms, bedrooms and functional rooms. Wall ducting via 160 mm round duct.



#### Silvento ec

Depending on the application or requirement, each fan of the Silvento ec series can be used as a surface-mounted, flush-mounted or clamp fan.



#### RA 15-60

Radial external wall fan with four ventilation stages and round cross-section. Can be combined with the facade element LUNOtherm-S and -S+.





SUPPLY & EXHAUST  
AIR WITH  
**HEAT RECOVERY**

EXHAUST SIDE



# Controlled home ventilation

Garage ventilation, cascaded ventilation and basement ventilation



## SPECIAL TYPES OF VENTILATION SYSTEMS

### Garage ventilation

Humidity in garages is a well-known problem. Especially in the cool season, vehicles bring humidity in the form of rainwater, snow and ice deposits into the protective shell thus causing condensation and mould problems. However, even the humidity of warm summer air can settle on the garage walls as condensation and cause humidity problems. Not only the building structure of the garage, but also the vehicles can suffer damage in the form of flash rust or mould. Ventilation with heat recovery via two fans from the e<sup>2</sup> series ensures that the garage is ventilated as required without cooling it down too much. In addition, exhaust gases, such as odours from lubricants and other chemicals, are replaced by fresh air.

### Cascaded ventilation

The term cascaded ventilation refers to the interconnection of living spaces that cannot be ventilated independently of each other. The directly ventilated room (with an installed ventilation system) is called primary room and the room ventilated in cascade (without directly installed ventilation system) is called secondary room. In our example, the bedroom with e<sup>2</sup> is the primary room and the adjacent room is the secondary room. Only rooms of the same or a similar type of use should be connected. Air flows from the primary to the secondary room and should therefore not come from bathrooms, WCs, kitchens or utility rooms to prevent odour transfer. For example, bedrooms can easily be cascaded with children's rooms for ventilation, and living rooms with study rooms or storage rooms.

### Basement ventilation

Basement ventilation requires a specially designed solution. The basement board of the Silvento ec is equipped with the appropriate programming to meet the special requirements of basement ventilation. Together with carefully placed ALD, the Silvento ec ensures clean and hygienic ventilation of the basement area. Thanks to the sensor technology integrated in the basement board, the fan can draw conclusions about the indoor and outdoor humidity and thus adjust the ventilation in a way similar to dew point monitoring. A pleasant room climate can thus be easily achieved in both heated and unheated basement rooms.



## GARAGE VENTILATION

Garages must have a self-contained ventilation system due to their use. In addition to efficient air exchange, ventilation with heat recovery provides high heat retention in the garage.

## CASCADED VENTILATION

Rooms without windows are ventilated independently of the ventilation system via the active cross-flow element ILD.



## BASEMENT VENTILATION

The ventilation of basement rooms becomes an innovative solution due to the optimised programming of the Silvento board 5/EC-KE and the combination with an ALD.

# Silvento ec

Radial outlet connection  
with leakage airtight  
non-return valve

Housing available for surface, flush  
and external wall mounting

Optimised casing  
with efficient ec-radial fan

Filter frame  
with washable filter

Two-room  
connection

Exchangeable and  
expandable control board

Washable  
filter

Inner screen  
with filter change indicator

Silvento KL-EC  
for a universal  
quick installation

# Silvento ec

One motor - endless solutions



## Determine the functions of the Silvento ec simply by selecting the control board:

**Basic board:** Seven ventilation stages from 15 to 60 (90) m<sup>3</sup>/h with time lag, interval switching and switch-on delay configurable

**Comfort board:** Basic board plus humidity and temperature sensor

**Comfort board+:** Comfort board plus VOC sensor for detecting odours in the air

**Cellar board:** Comfort board with special programming for the requirements of basement rooms

All boards can each be combined with a plug-in expansion module:

**Movement sensor module:** with radar-based sensor

**Wireless module:** Control via wireless without further cabling

**Dimensions:** Surface-mounted with 269 x 269 x 109,5 mm (W x H x D), cover with 260 x 260 x 23 mm and flush-mounted housing with 262 x 262 x 90,5 mm

## SILVENTO EC TECHNICAL DATA

Silvento-Type <i>V-EC<sup>1)</sup> or KL-EC<sup>2)</sup></i>	Basic board 5/EC-ZI (90)	Comfort board 5/EC-FK (90)	Comfort board+ 5/EC-FK+ (90+)	Cellar board 5/EC-KE
Volume flow	0/15/20/30/40/45/ 50/60/(90) m <sup>3</sup> /h	0 - 60 (90) m <sup>3</sup> /h	0 - 60 (90) m <sup>3</sup> /h	0 - 60 m <sup>3</sup> /h
Sound power level L <sub>w</sub> <sup>* 3)</sup>	from 18 dB(A)			
Power consumption <sup>3)</sup>	1,8 - 6,2 (14,5) W			
Supply voltage	200 - 240 V AC 50/60 Hz			
Control voltage	0 - 10 V			
Protection class	IPX5			

**1)** Silvento V are ventilator inserts that still require a flush or surface-mounted housing. **2)** Silvento KL are complete single-pipe fans that are clamped in pre-wall constructions. Silvento KL single-pipe fans fit into the flush-mounted housings of the LUNOS Skalar series. **3)** Free blowing \* Sound power level: The sound power level indicates how "loud" a unit is. The value is independent of the distance. All data are mathematically rounded.

The sound power level is only 18 dB(A) at 15 m<sup>3</sup>/h (basic ventilation) and 52 dB(A) at 90 m<sup>3</sup>/h (demand ventilation).

### Recommendation

LUNOS recommends the use of the newly developed diagnostic software as an extension of the scope of functions and for the use of logging functions. All functions and their advantages on page 69.

# Silvento ec V-EC & KL-EC

the modular system for fan trays and terminal fans

The control boards are integrated in the filter frame and can be easily configured and replaced if necessary by removing the cover. There is a slot on both the Basic board and the Comfort board, which can be equipped with an additional module.



Basic board



Comfort board



Comfort board+



Cellar board



Wireless module



Movement sensor

Basic board	Comfort board	Cellar board	Comfort board+
Selection of different volume flows for basic ventilation and demand ventilation possible: 15/20/30/40/45/50/60/(90), cellar board 15/20/30/40/45/50/60			
Time delay configurable to 0, 15 or 30 minutes			-
Interval switching: 30 minutes ventilation every four hours or 15 minutes ventilation every two hours			-
Switch-on delay can be set to OFF, 45 or 120 seconds			-
Slot for an additional module: - Radar based motion detector 5/BM or - FM-EO wireless module or - Diagnostic cable			
Filter change indicator			
-	Stepless comfort humidity-temperature control	Stepless comfort humidity-temperature-control	Stepless comfort humidity-temperature-VOC-control

## Comfort ventilation with the PLUS

The new boards Comfort board+ and Comfort board 90+ combines the infinitely variable humidity-temperature control with an additional VOC sensor. Now odours and other volatile hydrocarbon compounds that impair the quality of the room air are also detected by the Comfort board+. The Silvento ec automatically vents the polluted air.

The result is a constantly pleasant room climate with fresh, clean air. Commissioning is carried out in connection with the boards type 5/EC-FK+ or 5/EC-FK 90+ and the switch type 5/W2 FK.

## Cellar ventilation

The Silvento ec with the suitable board is the new, innovative solution for cellar ventilation from LUNOS. It ensures clean and hygienic ventilation of the cellar area. Comfort and a pleasant room climate can thus be easily achieved. Commissioning takes place in conjunction with the Type 5/EC-KE board and the Type 5/W2 FK switch. Thanks to the sensors integrated in the basement board, the fan can draw conclusions regarding the indoor and outdoor humidity and thus adjust the ventilation in a manner similar to dew point monitoring. A permanent voltage is required for this.

# Silvento ec

## Configuration of the installation housing



Type, dimensions (H x W x D in mm)	Blow-out connection <i>Length in mm</i>	Fire protection
<b>Surface-mounted housing 3/AP,</b> 269 x 269 x 109,5	Axially outgoing conical blow-out connection (DN 75 to DN 80), Length 69	–
<b>Surface-mounted housing 3/AP-B</b> 269 x 269 x 109,5	Metallic, axial outgoing blow-out connection (DN 80), length 79	With shut-off device K90-18017, suitable for installation in kitchens, connection diameter DN 80, with leakage airtight non-return valve
<b>In-wall housing 3/UP</b> 262 x 262 x 102,5 Installation depth 90,5 (without blow-out connection)	Radial or axial conical blow-out connection (DN 75 to DN 80), Length 69	–
<b>In-wall housing 3/UP-BR,</b> 270 x 270 x 114,5 Einbautiefe 102,5	Metallic, radially outgoing blow-out connection (DN 80), Length 64	With shut-off device K90-18017, suitable for installation in kitchens, connection diameter DN 80, with leakage airtight non-return valve
<b>In-wall housing 3/UP-BA</b> 270 x 270 x 114,5 Installation depth 102,5, with blow-out connection 175,5	Metallic, axial outlet blow-out connection (DN 80), Length 73	With shut-off device K90-18017, suitable for installation in kitchens, connection diameter DN 80, with leakage airtight non-return valve

All Silvento in-wall housings are also available as two-room variants.

# AB 30/60

## Axial fan

Exhaust air unit with ec-motor, can also be combined with the LUNOtherm-S facade element.

External grill with insect screen and facade protection ring

Whisper quiet fan unit in sound-absorbing melamine resin foam sleeve

Flow-optimized inner panel with washable G3 filter

Sound absorber for particularly quiet sound values



# AB 30/60

## Cost-efficient home ventilation

**With its low power consumption, the AB 30/60 is energy-efficient and thus makes an active contribution to environmental protection.**

The AB 30/60 axial fan is installed directly into the outer wall. It can be used alone or together with units of the e<sup>2</sup> series and is used for ventilating functional rooms such as kitchens and bathrooms.

The ec-motor with built-in electronics allows direct connection to the mains supply without additional components.

Computer-optimised fan blades in combination with an efficient flow channel and extensive sound insulation material ensure that the AB 30/60 provides optimum sound insulation from the outside and a very low noise level. Best performance for the environment due to low power consumption.

### Can be combined with inner screens of the 160 series



Standard  
Inner screen



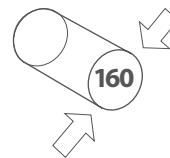
Comfort Inner screen  
(plastic design)



Comfort Inner screen  
(glass design)



Sound insulation  
Inner screen



**EXHAUST AIR**



### TECHNICAL DATA

**Volume flow**  
35/70 m<sup>3</sup>/h

**Sound power level\* L<sub>w</sub>**  
from 36 dB(A)

**Power consumption**  
1,5/4,9 W

**Supply voltage**  
100-240 V 50/60 Hz

**Core drilling**  
Ø 162 mm

**Minimum installation length**  
170 mm

**Dimensions**  
Ø 154 x 130 mm

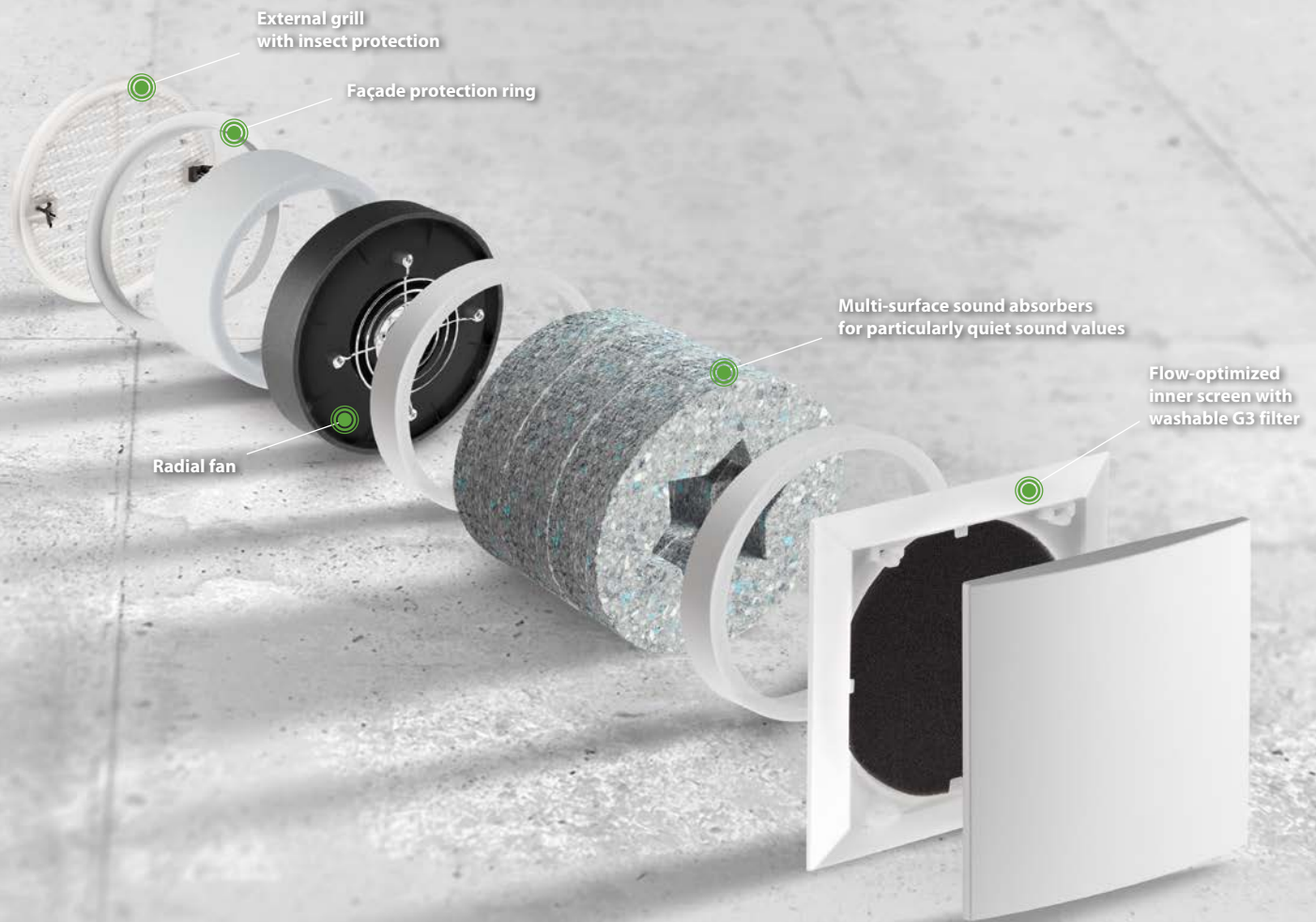
**Protection class**  
IP44

\*Sound power level:  
The sound power level indicates how "loud" a device is. The value is independent of the distance.  
All data are mathematically rounded.

# RA 15-60

## Radial fan

The combination of consistency of pressure and renovation simplicity





# RA 15-60

Perfect for outside exhaust air rooms

**Exhaust air unit with ec motor, can also be combined with the LUNOtherm facade element.**

The RA 15-60 owes its extraordinarily good pressure characteristic curve to the radial ec motor in combination with a very stable housing. In addition, the multi-surface sound absorbers give the RA 15-60 undreamt-of low running noise as well as optimal sound insulation from the outside.

With the aid of a LUNOS control system it is possible to operate the motor with humidity control and/or time functions.

**Can be combined with inner screens of the 160 series**



Standard  
Inner screen



Comfort Inner screen  
(plastic design)



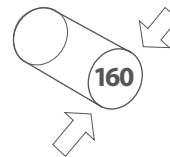
Comfort Inner screen  
(glass design)



Sound insulation  
Inner screen



Wireless screen with  
integrated control system



**EXHAUST AIR**

## TECHNICAL DATA

**Volume flow**  
15 - 60 m<sup>3</sup>/h

**Sound power level\* L<sub>w</sub>**  
from 24 dB(A)

**Power consumption**  
0,6 - 7,2 W

**Supply voltage**  
12 V DC SELV

**Core drilling**  
Ø 162 mm

**Minimum installation length**  
180 mm

**Dimensions**  
Ø 154 x 147 mm

**Protection class**  
IP20

\*Sound power level:  
The sound power level indicates how "loud" a device is. The value is independent of the distance. All data are mathematically rounded.

RA 15-60

# Outer wall air vents

For renovation and new construction -  
sound-optimised and weatherproof

# Outer wall air vents

Comfortable climate in tight buildings

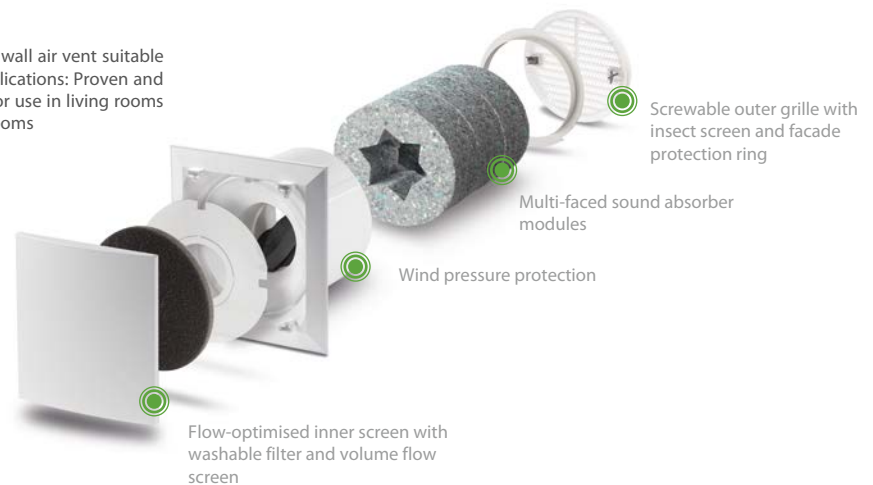
## Inner and outer city traffic affects our home climate.

For a high level of living comfort, it is essential to integrate well thought-out sound insulation measures in wall construction, windows and fresh air supply.

Due to the high sound insulation dimensions, the LUNOS ventilation system achieves an air exchange without significant losses in the quality of living. The outer wall air vents ALD, ALD-SV and ALD-S serve as passive air supply for living rooms and bedrooms. They are mainly used in combination with LUNOS exhaust air units of the Silvento range. A constant negative pressure is created by the exhaust air in the functional rooms, such as the bathroom and kitchen, which transports fresh air into the house via the outside wall air diffusers. When planned in accordance with standards, this ensures user-independent ventilation in accordance with DIN 1946-6.

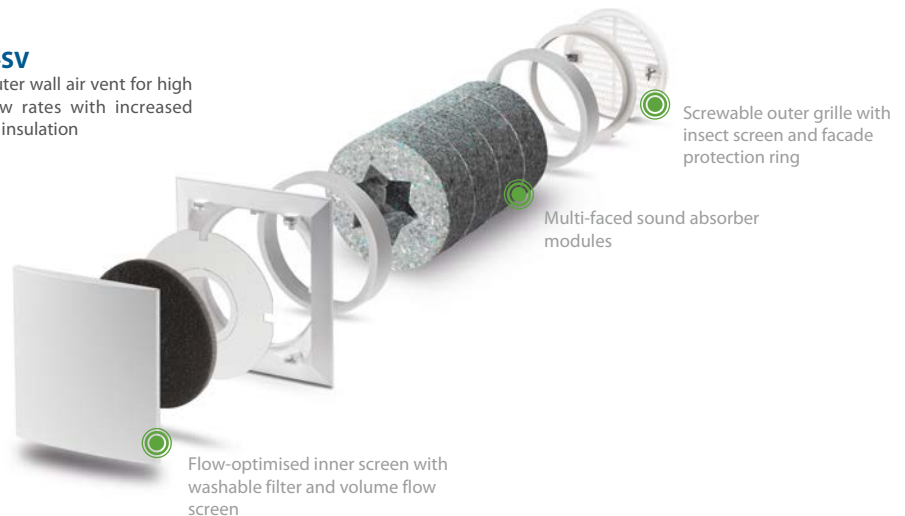
### ALD

The outer wall air vent suitable for all applications: Proven and efficient for use in living rooms and bedrooms



### ALD-SV

The outer wall air vent for high air flow rates with increased sound insulation

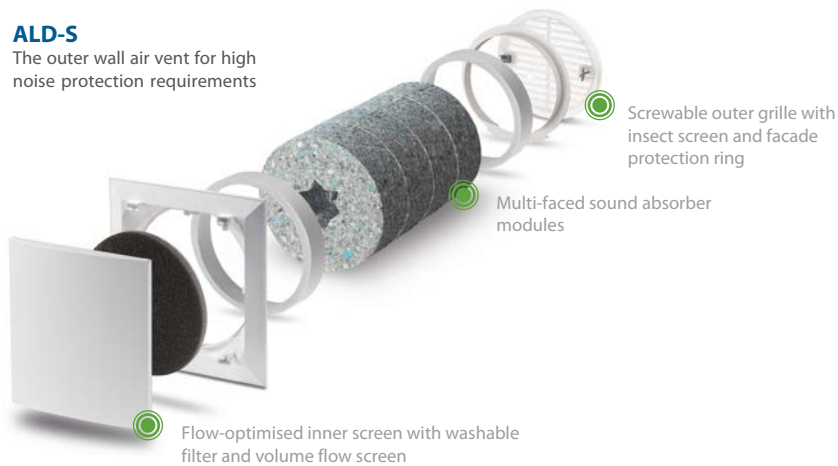


# Outer wall air vents

Comfortable climate in tight buildings

## ALD-S

The outer wall air vent for high noise protection requirements



## Can be combined with inner screens of the 160 series



Standard Inner screen



Comfort Inner screen (plastic design)



Comfort Inner screen (glass design)



Sound insulation Inner screen



Hygiene Inner screen (glass design) incl. F7\* filter



Hygiene Inner screen (plastic design) incl. F7\* filter



Home ventilation with feel-good factor - of course from LUNOS



# Outer wall air vents

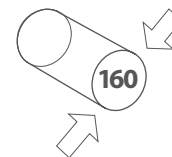
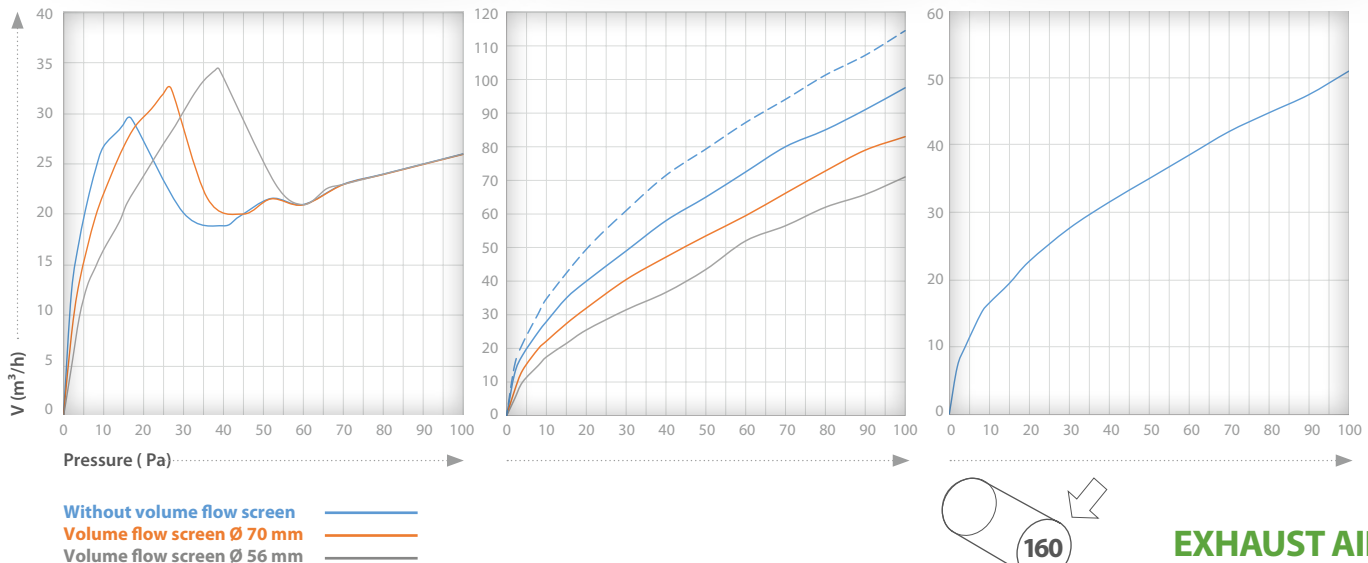
## Technical data

ALD		
<b>Length of built-in unit:</b> 360 mm <b>Ø:</b> 154 mm		
<b>V:</b>	at 8 Pa	at 4 Pa
⊗	25 m <sup>3</sup> /h	18 m <sup>3</sup> /h
⊙	20 m <sup>3</sup> /h	13,5 m <sup>3</sup> /h
○	15 m <sup>3</sup> /h	10 m <sup>3</sup> /h
<b>Sound insulation</b>		
Dn,e,w	Wall thickness	
50 – 65 dB(A)	360 mm	
56 – 69 dB(A)	500 mm	

ALD-SV		
<b>Length of built-in unit:</b> 360 mm <b>Ø:</b> 154 mm		
<b>V:</b>	at 8 Pa	at 4 Pa
⊗	25/30* m <sup>3</sup> /h	18 m <sup>3</sup> /h
⊙	20 m <sup>3</sup> /h	13,5 m <sup>3</sup> /h
○	15 m <sup>3</sup> /h	10 m <sup>3</sup> /h
<b>Sound insulation</b>		
Dn,e,w	Wall thickness	
53 – 66 dB(A)	360 mm	
61 – 71 dB(A)	500 mm	

ALD-S		
<b>Length of built-in unit:</b> 360 mm <b>Ø:</b> 154 mm		
<b>V:</b>	at 8 Pa	at 4 Pa
⊗	15 m <sup>3</sup> /h	10 m <sup>3</sup> /h
<b>Sound insulation</b>		
Dn,e,w	Wall thickness	
56 – 71 dB(A)	360 mm	
67 – 75 dB(A)	500 mm	

The given sound insulation values apply to the above-mentioned volume flows with a round duct completely filled with sound absorbers.  
\*Volume flow of the ALD-SV with an even arrangement of the sound insulation elements. All data are mathematically rounded.



EXHAUST AIR

# Inner wall air vent

Active cross-flow element for installation in interior walls



## Compatibility

ILD can be combined with all exhaust air systems, ALD, the e<sup>2</sup> series, as well as e<sup>90</sup>, Ne<sup>xt</sup> and LUNOMAT.

Synchronized conveying directions and volume flows can be established or independently controllable (ILD) systems can be set up.





# ILD Inner wall air vent

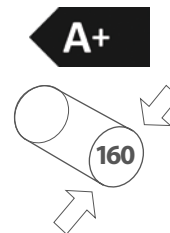
Ventilation for previously out-of-reach rooms

## Easy ventilation of adjoining rooms in combination with the existing ventilation control or via a separate control with the new ILD from LUNOS

The active cross-flow element ILD is set up using the 160 modular system and can be equipped with sound absorbers and two inner screens in addition to the fan insert ILD. The application area of the ILD are interior rooms that must be ventilated via another room. If there is no external wall available in a living space, then one or more ILDs can be used to

create a coupling with other rooms and thus establish an active air connection. For example an e<sup>2</sup> ventilation system can be installed in a bedroom (=primary room) and an adjacent interior side room (=secondary room) can be ventilated by an ILD. The ILD is the ideal supplementary ventilator for **cascaed ventilation** in a living space.

### Can be combined with inner screens of the 160 series.



## TECHNICAL DATA

**Volume flow**  
26 - 40 m<sup>3</sup>/h

**Sound power level\* L<sub>w</sub>**  
from 33 dB(A)

**Power consumption**  
0,7 - 1,5 W

**Supply voltage**  
12 V DC SELV

**Core drilling**  
Ø 162 mm

**Minimum installation length**  
100 mm

**Dimensions**  
Built-in unit Ø 154 x 60 mm

### Cascaded ventilation

The term cascaded ventilation is used to describe the interconnection of living spaces that cannot be ventilated independently of each other. The directly ventilated room (with an installed ventilation system) is called primary room and the cascaded ventilated room (without a directly installed ventilation system) is called secondary room. For example, the bedroom with e<sup>2</sup> is the primary room and the adjacent dressing room is the secondary room. Only rooms of the same or similar type of use should be connected. Air flows from the primary to the secondary room and should therefore not come from bathrooms, toilets, kitchens or utility rooms to prevent odour transfer. For example, bedrooms can easily be cascaded with children's rooms, and living rooms can be cascaded with work rooms or storage rooms.

\*Sound power level":  
The sound power level indicates how "loud" a device is. The value is independent of the distance. All figures are mathematically rounded.

ILD

# Ne<sup>xt</sup>t

## Heat recovery unit

The Ne<sup>xt</sup>t is not only suitable for home ventilation, but also for use in kindergartens, schools, offices, hotels and medical practices. The Ne<sup>xt</sup>t also delivers the best results in areas or heights where extraordinary wind loads prevail and in areas where high sound insulation is required.



Ne<sup>xt</sup>t NXT with 9/NXT-IB for external regulation by radio or control

# Ne<sup>xx</sup>t

## Decentralized heat recovery unit

### Low noise level and maximum passive soundproofing

The Ne<sup>xx</sup>t is extremely energy-efficient thanks to its very low power consumption: the ec technology with high efficiency enables low power consumption.

The integrated controller ensures perfect interaction between the various components. Equipped with humidity-temperature sensors, the automatic control system ensures efficient ventilation with moisture protection even in the standard version. Optionally, the Ne<sup>xx</sup>t can be equipped with the FM-EO radio module for control and communication with other LUNOS components and for SmartHome integration. The heart of the Ne<sup>xx</sup>t is the plug-in unit with heat exchanger, which is equipped with innovative membrane technology

and achieves a heat recovery rate of up to 95,5 %. In addition, the mode of operation of the heat exchanger ensures that it is largely ice-free and provides comfort in the interior due to the additional re-humidification.

### Ne<sup>xx</sup>t NXT-E

Equipped with an integrated control element in the inner screen, the NXT-E can be operated directly on the unit.

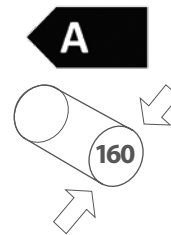
### Ne<sup>xx</sup>t NXT

The NXT differs from the NXT-E only in its control capability. The required external regulation can be taken over by all 12 V controls from LUNOS.

### OPTIONAL

#### Electrical flap closure

Electrical flap closure 9/KVEN-2 for Ne<sup>xx</sup>t based on the 160 round duct. It opens or closes the panel feed-through automatically when the unit is switched on or off



### Recommendation

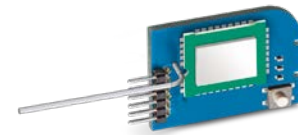
As an extension of the range of functions and for the use of logging functions, LUNOS recommends the use of the newly developed diagnostic software. All functions and their advantages on page 69

**HEAT RECOVERY**



### OPTIONAL FM-EO

Wireless module for bidirectional wireless transmission



### OPTIONAL F9\*\*-Filter

For the highest demands of hygiene. Already equipped with **F7\*-filters** as standard.



\*Equivalent to 55% according to ISO 16890 ePM1.

\*\*Equivalent to 80% according to ISO 16890 ePM1.

The modular system for the perfect fan



\*From 30 cm an adapter is required for each 10 cm or part thereof of the round duct.

Ne<sup>xx</sup>t

Technical data



Characteristics	NXT-E and NXT
Volume flow	15 - 110 m <sup>3</sup> /h
Max. degree of heat supply	96 %
Heat supply level according to EN 13141-8 at reference volume flow	25 m <sup>3</sup> /h: 96 % 50 m <sup>3</sup> /h: 89 % 75 m <sup>3</sup> /h: 84 %
Max. standard sound level difference $D_{n,e,w}$	49 dB
Sound power level $L_w$	from 20 dB(A)
Power consumption*	22 W
Supply voltage	200-240 V   50/60 Hz (115 V   60 Hz on request)
Core drilling	162 mm
Minimum installation length	Surface-mounted: 110 mm, flush-mounted: 280 mm
Depth for wall mounting	172 mm Housing + 105 mm Flap closure in wall ducting
Dimensions of the device	480 mm x 480 mm x 170 mm
Size inner screen	510 mm x 510 mm x 66 mm
Size outer hood	235 mm x 205 mm x 72 mm
Energy efficiency class	
Protection class	IP22

\*At 70 % of the maximum volume flow, according to ErP Directive, EU Regulation 1254/2014. All data are mathematically rounded.

# e<sup>2</sup> series

## Flexible in any field

No fan has the decentralized ventilation with heat recovery so characterized like the e<sup>2</sup> from LUNOS.

### e<sup>2</sup>60short

The e<sup>2</sup>60 for narrow outer walls from 200 mm wall thickness

### e<sup>2</sup>short

The short one: for small outside walls from 200 mm wall thickness

### e<sup>2</sup>60

The powerful one: constant pressure with a volume flow from 5 - 60 m<sup>3</sup>/h

### e<sup>2</sup>

The classic: proven and efficient for use in living room and bedroom

e<sup>2</sup> series

## Technical data



Characteristics	e <sup>2</sup> 60	e <sup>2</sup> 60short	e <sup>2</sup>	e <sup>2</sup> short
<b>Volume flow</b>	5 - 60 m <sup>3</sup> /h	5 - 60 m <sup>3</sup> /h	15 - 38 m <sup>3</sup> /h	15 - 38 m <sup>3</sup> /h
<b>Max. degree of heat supply</b>	96 %	89 %	94 %	88 %
<b>Heat supply level according to EN 13141-8 at reference volume flow</b>	20 m <sup>3</sup> /h: 96 % 40 m <sup>3</sup> /h: 90 % 60 m <sup>3</sup> /h: 85 %	40 m <sup>3</sup> /h: 83 % 60 m <sup>3</sup> /h: 80 %	20 m <sup>3</sup> /h: 93 % 38 m <sup>3</sup> /h: 91 %	20 m <sup>3</sup> /h: 85 % 38 m <sup>3</sup> /h: 80 %
<b>Heat supply level according to DIBt*, Approval number</b>	85 % Z-51.3-455	89 % Z-51.3-479	90 % Z-51.3-450	86 % Z-51.3-450
<b>Max. standard sound level difference D<sub>n,e,w</sub></b>	67 dB	67 dB	54 dB	54 dB
<b>Sound power level L<sub>w</sub></b>	from 18 dB(A)	from 18 dB(A)	from 29 dB(A)	from 28 dB(A)
<b>Power consumption</b>	0,4 - 3,3 W	0,4 - 3,3 W	0,7 - 4 W	0,6 - 3,9 W
<b>Minimum installation length</b>	280 mm (lower on request)	200 mm	280 mm	200 mm
<b>Dimensions</b>	Plug-in module Ø 154 x 243 mm	Plug-in module Ø 154 x 160 mm	Plug-in module Ø 154 x 243 mm	Plug-in module Ø 154 x 168 mm
<b>Compatibility</b>	All 160 systems incl. LUNOtherm and external hoods as external finish	All 160 systems incl. LUNOtherm and external hoods as external finish	All 160 systems incl. LUNOtherm and external hoods as external finish	All 160 systems incl. LUNOtherm and external hoods as external finish
<b>Energy efficiency class</b>	<b>A+</b>	<b>A</b>	<b>A</b>	<b>A</b>

\* When using the 9/MRD wall-mounted housing as insulation, without 9/MRD 2% deduction. All data are mathematically rounded.

# e<sup>2</sup>60

[esquaredsixty]

## e<sup>2</sup>60short

[esquaredsixtyshort]

### Ready for the demands of the future.

Thanks to its very low power consumption and intelligent motor control, the e<sup>2</sup>60 is extremely energy efficient and easily achieves energy efficiency class A+.

Highly efficient heat accumulator with a degree of heat provision of 90% resp. 83%

Patented air diffuser for optimal inflow

Noise-optimised fan unit with pressure-constant ec-motor

Inner screen with washable G3 filter



## e<sup>2</sup>60 and e<sup>2</sup>60 short

The reference units in their class

**With classified wind pressure stability and high volume flows, the e<sup>2</sup>60 is a reference device in its class.**

The consequent improvement of the ec-technology and the wing aerodynamics ensures particularly low noise emissions.

The fact that the e<sup>2</sup>60 achieves the high heat provision level of 96 % is largely due to the newly developed and patented air diffuser, which ensures a particularly even flow through the heat exchanger. The e<sup>2</sup>60

is the first axial fan to achieve a constant volume flow at high back pressures. This outstanding feature of external motor control ensures that the e<sup>2</sup>60 is the first unit of its type to meet the requirements of pressure class S1 according to DIN 13141-8. This makes it easy to use in areas with high wind pressures, such as on the coast or at high altitudes. A further advantage of the e<sup>2</sup>60 is its high volume flow bandwidth.

With the smaller heat accumulator of the e<sup>2</sup>60short, the range of application is extended to slim outer walls with a wall thickness of 200 mm or more.

### Can be combined with inner screens of the 160 series



Standard  
Inner screen



Comfort inner screen  
(plastic design)



Comfort inner screen  
(glass design)



Wireless screen with  
integrated control system



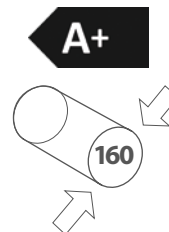
Sound insulation  
Inner screen



Hygiene inner screen  
(glass design)



Hygiene inner screen  
(plastic design)



**HEAT RECOVERY**

### F7\*-FILTER

Special pollen and fine dust filters that simply leave annoying particles outside. F7\*-filters included with IBG-H and IBK-H.



\*Equivalent to 55% according to ISO 16890 ePM1.

## Reversing technology for exhaust air rooms

For bathrooms, WCs and kitchens



Weather protection outer hood with separate air streams and insect protection

Highly efficient ceramic heat accumulator with a max. degree of heat provision of 92 %

Quiet fan units in counterflow arrangement for simultaneous ventilation and exhaust

Flow-optimized inner cover with separate supply and exhaust air openings and washable G3 or pollen filter

e<sup>90</sup>

## Supply and exhaust air in one unit

**In one e<sup>90</sup>, two fans provide simultaneous air supply and exhaust. Therefore, operation in pairs is not necessary.**

The e<sup>90</sup> ensures optimum ventilation with heat recovery in bathrooms, WCs and kitchens. It combines supply and exhaust air by means of two small fans located inside the fan.

The e<sup>90</sup> is one of the world's smallest fans for domestic ventilation with heat recovery in the two-channel unit class.

## Outer hood

The e<sup>90</sup> can be combined with the universal hood or the two-channel outer hood on the façade.



HEAT RECOVERY

**LUNOS**  
energy-efficient

## TECHNICAL DATA

**Volume flow**5 - 20 m<sup>3</sup>/h (heat recovery), 45 m<sup>3</sup>/h (exhaust)**Max. degree of heat supply**

92 %

**Heat supply level\***

91 %

**Max. standard sound level difference D<sub>n,e,w</sub>**

46 dB

**Sound power level\*\* L<sub>w</sub>**

from 28 dB(A)

**Power consumption**

1 - 4,9 W

**Supply voltage**

12 V DC SELV

**Core drilling**

Ø 162 mm

**Minimum installation length**

300 mm

**Dimensions**

Screen 237 x 217 mm

Plug-in module Ø 154 x 300 mm

**Protection class**

IP22

\*According to EN 13141-8 at reference volume flow.

\*\*Sound power level: The sound power level indicates how "loud" a device is. The value is independent of the distance. All data are mathematically rounded.

e<sup>90</sup>

# LUNOtherm-S

## Facade element

Draught-free, hygienic,  
soundproof  
and almost invisible.

Connection round duct  
DA 160

Variable  
shortening

Insect screen

Sound absorber for  
increased sound insulation

## Facade protection insert and bird screen

More protection for the façade and the  
LUNOtherm-S in heavily stressed areas  
or in exposed locations

### LUNOtherm-S

Suitable for installation in an ETICS  
approved by the building authorities.

### LUNOtherm-S+

Suitable for installation in an ETICS  
approved by the building authorities.  
With the Plus in sound insulation.



# LUNOthem-S and LUNOthem-S+

## The LUNOS facade elements

**With the LUNOthem-S facade element the facade design is finally no longer restricted**

Due to its position in the window lintel or in the window reveal, the element is inserted directly into the insulation layer of the thermal insulation composite system (ETICS) and is almost invisible from the outside. The LUNOthem-S can be installed above or next to the window, so that the combination with a roller shutter box is also possible without any problems.

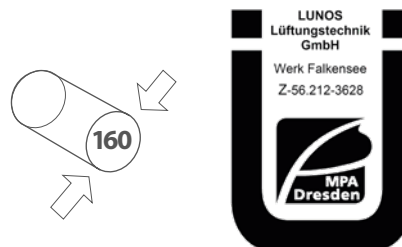
Together with the sound absorber 9/SD-LS, the LUNOthem-S becomes the LUNOthem-S+, which easily achieves values of up to 74 dB. It goes without saying that the LUNOthem-S can be retrofitted with the sound absorber to become the LUNOthem-S+ even when installed. Both façade elements are particularly easy

to process. The ventilation opening can be positioned variably and the deflection of the air - and thus also the sound - by a further 90° ensures the high sound insulation properties of LUNOthem-S and -S+. A significantly lower weight and an adaptable standard size additionally enable better handling in logistics and on the construction site.

**In combination with the ALD-S, the LUNOthem-S+ can achieve a standard sound level difference of up to 75 dB.**

Benefit from the various advantages of our product series: Especially the e<sup>2</sup> series and the ALD can be excellently combined with LUNOthem.

**Registration number**  
LUNOthem-S and LUNOthem-S+  
Z -56.212-3628



### TECHNICAL DATA

**LUNOthem-S and LUNOthem-S+**

Suitable for installation in an ETICS approved by the building authorities.  
Installation with over-insulation or under-insulation possible.  
Dimensions (H x W x D): 930 x 700 x 60 mm  
Dimensions outer grille (H x W): 345 x 53 mm

**Sound absorber for LUNOthem-S**

Type 9/SD-LS for retrofitting  
Dimensions (H x W x D): 579 x 131 x 37 mm

LUNOthem-S and LUNOthem-S+ have a general technical approval according to DIBt

LUNOthem-S is supplied in 60 mm thickness and is processed by the facade builder like an insulation board of the ETICS. Detailed installation instructions are available on request. Since LUNOthem-S is installed in the flash-over area, its suitability was tested within the framework of the general building inspection approval of the DIBt.

LUNOthem

# Combination of the 160 series for decentralised ventilation technology

## 01 PLUG-IN MODULE

Series e<sup>2</sup>



RA 15-60



AB 30/60



## 02 ROUND DUCT

9-R 160-500  
Länge 500 mm



## 03 INNER SCREEN

9/IBE



9/IBK



9/IBG



9/IBF-RF



## 04 EXTERNAL CLOSURE OR LUNOTHERM

Plastic, round  
1/BE 180, 1/WE 180,  
1/AZ 180



metal, round, square  
1/RME 175, 1/QME 228  
1/RMK 175, 1/QMK 228



Outer hood, metal  
1/HWE, 1/HAZ,  
1/HES





Use two-channel external closures!

ALD



ALD-S



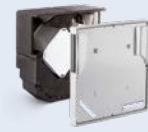
ALD-SV



e<sup>90</sup>



Ne<sup>xt</sup> and Ne<sup>xt</sup>-E



9-R 160-700  
Length 700 mm



3/NXT 3/NXT + 3/NXT-AP



9/IBS



9/IBG-H



9/IBK-H



Two-channel screen 2/EGI  
(Scope of delivery e<sup>90</sup>)



9/NXT-IBF



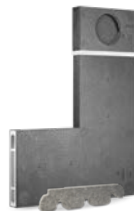
9/NXT-IB



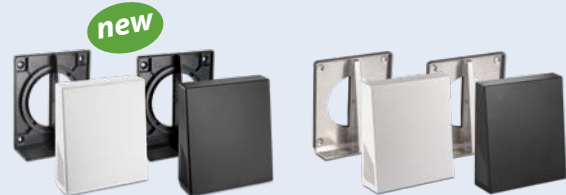
LUNOtherm-S



LUNOtherm-S+



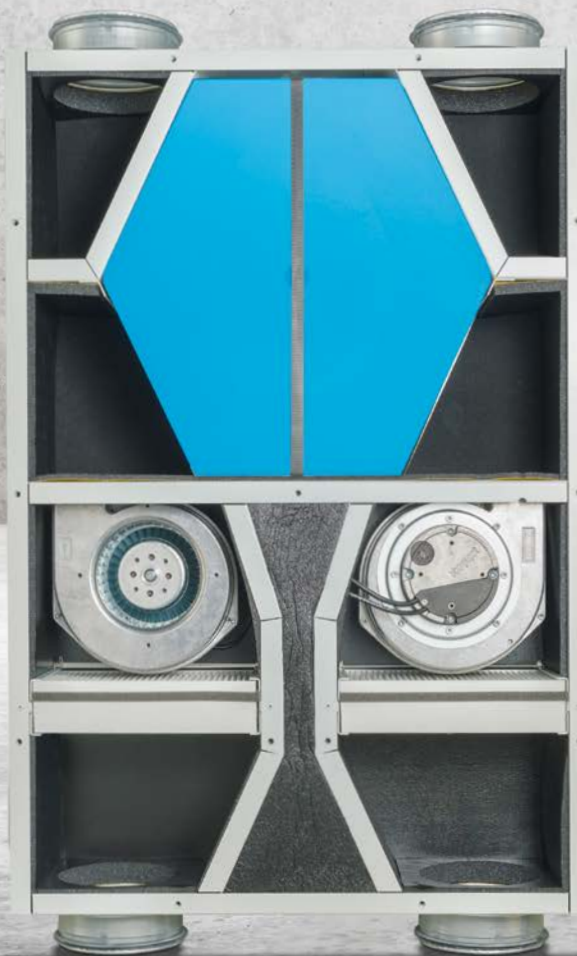
Two-channel hood, plastic and metal  
1/KWE, 1/KAZ and 1/HWE-2, 1/HAZ-2



# LUNOMAT

## Central home ventilation unit

Fresh air supply of the living areas,  
by pressure-resistant and highly efficient  
ec radial motors for volume flows  
up to 125 m<sup>3</sup>/h.





# LUNOMAT

The central home ventilation unit from LUNOS

## Highly efficient enthalpy heat exchanger with a heat supply efficiency of up to 95 %

With a highly efficient enthalpy heat exchanger and a heat supply level of up to 95%, the LUNOMAT is the performance professional for the supply of fresh air to living spaces.

Thanks to exchangeable filters of the class F7, the LUNOMAT can be adapted to the most diverse requirements. The pressure-resistant and highly efficient ec radial motors are also suitable for volume flows of up to 125 m<sup>3</sup>/h at 100 Pa and ensure optimum air distribution via an appropriate duct network.

In short: The LUNOMAT is the all-round talent from LUNOS for central apartment ventilation.

The LUNOMAT can be operated by all LUNOS control systems: TAC, Smart Comfort, universal control and gesture control. Of course, it is also possible to receive commands from the common smart home controls or homee via optional wireless modules.

## Replacement filter

Exchangeable filters of class F7\* available



\*Equivalent to 55% according to ISO 16890 ePM1.



HEAT RECOVERY



## TECHNICAL DATA

### Volume flow

40 - 125 m<sup>3</sup>/h at 100 Pa

### Max. degree of heat supply

95 %

### Heat supply level\*

75 m<sup>3</sup>/h: 92 %  
100 m<sup>3</sup>/h: 87 %  
125 m<sup>3</sup>/h: 85 %

### Heat supply level according to PHI

83 %

### Device sound

at 100 m<sup>3</sup>/h, 100 Pa  
45 dB(A)

### Specific

### Power consumption (SPI)

at 50 Pa\*  
0,3 W/(m<sup>3</sup>/h)

### Max. power consumption

at 125 m<sup>3</sup>/h, 100 Pa  
52 W

### Mains voltage

100 - 240 V | 50/60 Hz

### External and internal leakage

Klasse A1

### Dimensions (H x W x D)

805 x 555 x 190 mm

### Installation options

New construction and renovation  
Ceiling and wall mounting  
4 x DN 125 mm Outlets

\*According to EN 13141-7 at reference volume flow. All data are mathematically rounded.

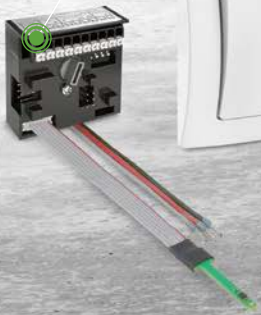
# Controls

## Whether with gesture or automated

LUNOS offers control systems that can be adapted exactly to the wishes and requirements.

### 5/UNI-FT & 5/UNI-RF

Can be controlled automatically, standard with humidity/temperature control and time delay module, also available as wireless version



### Gesture control

Contactless controllable with 60 RGB LEDs and many standby display options



### Wireless screen

An independent, wireless control housed in a discreet design screen



### Smart Comfort & Smart Comfort wireless

Especially easy to operate: one touch of a button is enough, also available as wireless version



### TAC

The all-rounder from LUNOS can be configured for the most diverse ventilation scenarios

# Wireless screen with 5/UNI-RF

The complete technology under one hood

The wireless screen combines elegant design for the living room with the control technology of the universal control. The built-in 5/UNI-RF with humidity and temperature sensors has an integrated radio module that allows communication with other 5/UNI-RF, Smart Comfort wireless controls and wireless screens without additional wiring. In automatic mode, outside temperature and outside humidity are integrated into the intelligent control and the volume flows are adjusted according to the humidity differences between inside and outside. Other LUNOS radio products or smart home controls with UNI-EO radio module can be connected.

## Functions

- » Including power supply unit for direct connection to 230 V, 50/60 Hz.
- » Built-in 5/UNI-RF with integrated radio module for connection with further LUNOS wireless controls and radio screens
- » UNI-EO radio module can be connected
- » Automatic humidity control
- » Three different humidity control ranges adjustable
- » Manual control via pushbutton on the screen (four-stage) or optional connection of external switches possible
- » Integrated delay time and interval operation
- » 0 - 10 V input for connection to the TAC or to the home automation system.

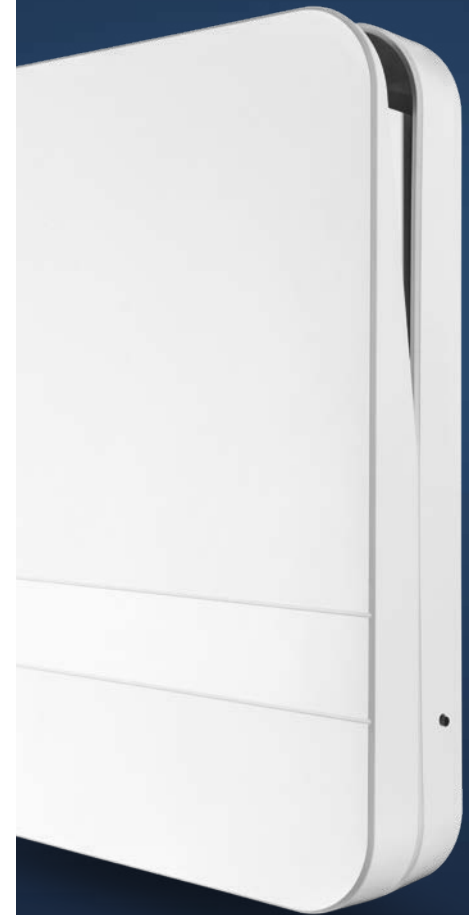
## Optional device combinations

All 12-volt fans\* of the LUNOS 160 series can be controlled with the wireless screen 9/IBF-RF.



\*except e<sup>90</sup>

**LUNOS**  
energy-efficient



# Smart Comfort

## Ventilation at the touch of a button

This control is extremely easy to operate. The different ventilation modes and also the humidity-temperature mode recommended for continuous operation can be set directly at the touch of a button. If the unit is in the recommended humidity-temperature mode, the ventilation system works particularly efficiently and keeps the room climate at an optimum level.

**The 5/SC-RF control is equipped with the LUNOS wireless module.**

### Functions

- » Automatic humidity control, intensive ventilation, night setback and summer ventilation selectable via push buttons
  - » Four different lower limits of the humidity range adjustable
  - » Humidity and frost protection functions
  - » Wireless module connectable
  - » 0 - 10 V input for connection to the TAC or to the home automation system
- » Control 5/SC-RF with integrated wireless module for LUNOS wireless system

### Possible device combinations

The Smart Comfort can control all 12-volt fans from LUNOS. With an appropriately configured 0-10 V output, different fan types can also be controlled via connected universal controls.

The Smart Comfort wireless can additionally be coupled with other Smart Comfort wireless controls (5/SC-RF), universal wireless controls (5/UNI-RF) and the LUNOS wireless screen.



Wireless module  
UNI-EO connectable



**Smart Comfort 5/SC-FT**  
ventilation exactly as required



**Smart Comfort wireless 5/SC-RF**  
with LUNOS wireless module

## 5/UNI-FT

### Humidity and temperature control as standard

With the universal control unit 5/UNI-FT, every ventilation unit can be controlled automatically. It is equipped as standard with humidity/temperature control and time delay module and has a summer mode. The universal control unit is a multifunctional 12-volt control unit that can be operated with a simple two-pole series switch.

**The 5/UNI-RF control is equipped with the LUNOS wireless module.**

#### Functions

- » Automatic humidity control
  - » Three different humidity control ranges adjustable
  - » Manual control via series switch (four-stage)
  - » Integrated time tracking with interval operation
  - » Wireless module connectable
  - » 0 - 10 V input for connection to the TAC or to the home automation system
- » Control 5/UNI-RF with integrated wireless module for LUNOS wireless system

#### Possible device combinations

All 12-volt fans of LUNOS can be controlled via the universal controller 5/UNI-FT. With an appropriately configured 0-10 V output, different fan types can also be controlled via connected universal controls.

The universal wireless control is additionally equipped with the LUNOS wireless module. This makes it easy to link it to other universal wireless controls (5/UNI-RF), Smart Comfort wireless controls (5/SC-RF) and the LUNOS wireless screen.



Wireless module  
UNI-EO connectable



**Universal control 5/UNI-FT**  
with humidity/temperature control



**Universal wireless control 5/UNI-RF**  
with LUNOS wireless module

# TAC

## Touch Air Comfort – the multitalent of LUNOS

The TAC can be configured for different ventilation scenarios. This control proves to be an energy-efficient combination artist: either different fans or individual universal controls are connected to the three outputs of the control. The integrated power supply unit is absolutely sufficient for a three-room apartment, for example, in which four e<sup>2</sup> in the living rooms and one Silvento ec in the bathroom are controlled. If there is a higher demand for ventilation units to supply larger apartments or single-family homes, the Touch Air Comfort can also regulate several universal controls.

### Possible device combinations

The 12 V fans of the 160 series as well as the Ne<sup>xt</sup> and Silvento ec can be connected directly.

Alternatively, almost any number of fans can be connected via universal controls and operated via the TAC.

### Functions

- » E-Ink display for lowest power consumption
- » Integrated humidity/temperature sensor
- » Expandable with the CO<sub>2</sub> sensor SCO<sub>2</sub>-TAC
- » direct operation of up to four e<sup>2</sup> or two e<sup>90</sup> or one RA 15-60
- » Silvento ec fans can be directly connected and controlled via the low voltage input
- » Further devices can be controlled via connected universal controls
- » Comfort functions such as night setback, summer ventilation, etc. also via weekly schedule via integrated real-time clock
- » Humidity and frost protection functions
- » USB interface for software updates, language changes and export of recorded operating and sensor data
- » Dimensions: (W x H x D)  
155 x 97 x 20 mm (wall mounting), incl. deep electronics box, horizontal installation, dimensions:  
(W x H x D) 143 x 70 x 75 mm



CO<sub>2</sub> sensor SCO<sub>2</sub>-TAC connectable

A continuous measurement of the CO<sub>2</sub> values enables the TAC to control the fans according to the air quality.

# Gesture control

## Ventilate with a gesture

Different control systems are available for all products. The Gesture control works via an electromagnetic field, which can be activated by different gestures - that means contactless. Under the touch unit there are 60 RGB LEDs, which give feedback during operation and signal activated functions and states in an easily understandable way.

### Functions

- » Select standby displays: time, temperature/humidity level, filter runtime, night light
- » Limit values of the humidity range adjustable
- » The volume flow of the areas to be ventilated can be controlled independently for both areas
- » The comfort functions intensive ventilation, night setback and summer ventilation can be individually parameterised in running time and level
- » Humidity and frost protection functions
- » Different device types adjustable via one control system
- » Control of the LUNOS wireless system possible via 5/UNI-RF

### Possible device combinations

Universal controls as well as devices of the Ne<sup>xt</sup> and/or Silvento ec series can be connected to the two outputs of the gesture control. These two control paths or channels can be controlled separately, so that two different areas can easily be controlled independently of each other. This means that the entire ventilation system of a residential unit can be operated via one control.



**LUNOS**  
energy-efficient

# Wireless technology



## The LUNOS wireless system

The LUNOS wireless system is an independent system that transmits bidirectionally at 868 MHz. 5/UNI-RF, 5/SC-RF and the wireless screen 9/IBF-RF are equipped with LUNOS wireless modules and can be connected to the homee Smart Home central unit or to other Smart Home systems via the UNI-EO module.



Wireless screen with LUNOS wireless modul



LUNOS wireless system Universal wireless control and Smart Comfort wireless with LUNOS wireless modul



# Wireless technology

For easy smart home connectivity

**The LUNOS wireless system with bidirectional wireless technology - energy efficient and safe. An EnOcean module makes the LUNOS wireless system Smart Home-compatible.**

The bidirectional wireless technology transmits reliable signals with very small amounts of energy. For the connection of the LUNOS wireless products with the Smart Home the equipment with an EnOcean module is sufficient. The transmitters with EnOcean technology can be operated partly without batteries and therefore with low maintenance. The necessary energy is generated by the piezoelectricity of switches or solar cells.

In order to control the ventilation system via smartphone, tablet or computer, LUNOS

recommends the use of the homee Smart Home central unit, which already has a WLAN interface as standard and thus provides for the connection to the Internet. With the EnOcean expansion module from homee, the LUNOS wireless modules are integrated into the smart home control center.

But the easy-to-use interface, available as an app for iOS and Android or as a WebApp, can be used to control more than just the ventilation: all smart home functions can be operated via this one application.



## 5/UNI-RF & 5/SC-RF and 9/IBF-RF

The LUNOS products with the new bidirectional LUNOS wireless standard.



## Brain Cube & EnOcean Cube

The Brain Cube as basis of the home smart home system with the EnOcean Cube as link to the LUNOS products makes the ventilation system smart.

App available  
for iOS, Android  
or as WebApp

# Wireless technology

For easy smart home connectivity



**Remote control  
RC-EO**

The RC-EO remote control is battery-free, shock and splash-proof and is therefore suitable for all areas of everyday life. Coupled with the UNI-EO module or the FM-EO wireless module, all connected devices can be controlled by radio command. Via the two available channels, volume levels can be switched and special functions activated and deactivated.



**Flush-mounted module  
UPM-EO**

The UPM-EO flush-mounted module is a transmitter and receiver for wireless signals. Connected to a simple push-button or series switch, such as our 5/W2T, switching commands can be transmitted by radio. This is how a simple fan, such as the AB 30/60, becomes wireless. Especially during renovation work, this allows the fan to be operated manually at a later date without the need for complex cable laying.



**External Humidity Temperature  
Sensor SFT-EO**

The external humidity temperature sensor SFT-EO can be installed almost anywhere and does not require any additional power supply. If you have coupled the SFT-EO as an indoor sensor to the UNI-EO or FM-EO modules, the values of the wireless sensor and internal sensors are compared and ventilation is based on the climatic conditions thus transmitted. When coupled as an outdoor sensor with the UNI-EO module, the intelligent control unit compares the absolute values of indoor and outdoor climate and adjusts the ventilation accordingly.

# Wireless technology

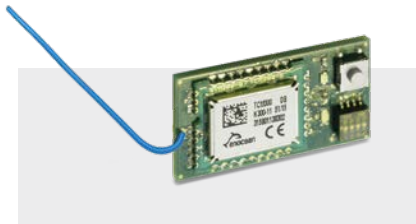
For easy smart home connectivity



**Wireless screen 9/IBF-RF and wireless control 5/UNI-RF**

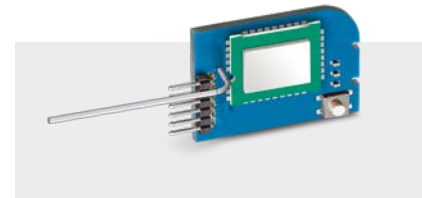
The wireless screen combines elegant design for the living room with the control technology of the universal control. It is equipped as standard with a power supply unit for direct connection to 230 V, 50/60 Hz and the 5/UNI-RF with humidity and temperature sensor and an integrated radio module.

The wireless controls **5/UNI-RF** and **5/SC-RF** has all the functions of the proven 5/UNI-FT and 5/SC-FT. Thanks to the radio module integrated as standard, it enables communication with LUNOS radio products. Communication with EnOcean products or smart home controls is possible via the EnOcean module UNI-EO without additional wiring.



**Wireless module UNI-EO for universal control**

The UNI-EO wireless module is used for universal control and Smart Comfort and ensures constant communication with the coupled LUNOS wireless components. This includes both the processing of received sensor values and switching commands as well as the transmission of system states. Automatic modes can be extended and optimized. The control system can also adapt the operation of the connected devices to linked ventilation components. For example, it is possible for connected e<sup>2</sup> devices to actively supply supply air when an exhaust fan transmits a switched demand ventilation by a wireless command.



**Wireless module FM-EO for Silvento ec and Ne<sup>xt</sup>**

The FM-EO wireless module is compatible with all Silvento ec and Ne<sup>xt</sup> models. In the exhaust air system, the Silvento ec and the ventilation behaviour can also be optimised with the coupled outdoor sensor SFT-EO. In conjunction with e<sup>2</sup> fans on a universal control unit with UNI-EO module, sensor values can be exchanged and the ventilation operations of the systems can be coordinated. The same applies to the combination Ne<sup>xt</sup> and Silvento ec. If several Ne<sup>xt</sup> units are operated in one utilisation unit, a temperature-controlled ventilation operation can be achieved by targeted cross-ventilation of the units among themselves. It is also possible to react efficiently to varying outside temperatures and to keep the inside temperature constant.

# homee Smart Home

## The modular central unit

homee is a modular smart home control center that enables the linking of various trades and technologies. It provides a clearly structured and easy-to-use interface in the form of an app for iOS and Android or as a WebApp. The central unit is the white Brain Cube, which already has a WLAN interface as standard. This ensures both the connection to the Internet and communication with WLAN-capable smart home devices. This Brain Cube can then be supplemented by further cubes, each of which represents a radio technology. So the optional cube with the EnOcean, ZigBee and Z-Wave wireless standards can be stacked on top of the central unit, which can then be expanded to form a universal communication interface.

The modular smart home central homee also enables communication between devices and sensors from different manufacturers by means of so-called homee-grams. These can be used to trigger sensor-dependent switching actions, for example, and even across different systems. This makes ventilation more convenient than ever before.

### Brain Cube

The Brain Cube is the central control unit and forms the basis of the homee Smart Home. Here, the signals received by the optionally available wireless cubes are processed. The Brain Cube connects to the local network via WLAN, so that it and the connected radio components can be reached from anywhere.



### EnOcean Cube

With the EnOcean Cube wireless modules from LUNOS can be integrated and controlled from home. It sends all information to the Brain Cube, which then processes it. Conversely, the Brain Cube sends instructions from app and home programs via the EnOcean Cube to the LUNOS wireless modules, which control the fans accordingly.



### ORDER HOMEE PRODUCTS

#### Codeatelier GmbH

Lindenstraße 20  
74363 Güglingen

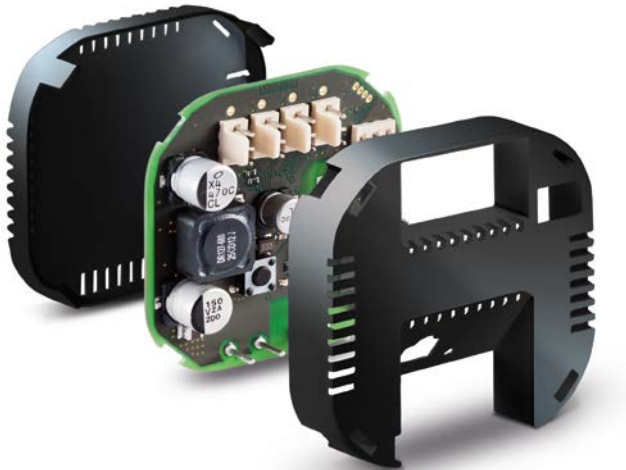
hello@codeatelier.com  
www.hom.ee  
Shop: www.store.hom.ee

# KNX-Control

## KNX Control4

The KNX LUNOS Control4 module enables the control of decentralised ventilation units with heat recovery and exhaust air fans via the KNX bus. It can network several modules with each other via the KNX bus and thus enable any desired operation. For direct control of the ventilation devices, the existing push-button inputs can be used.

The module has an integrated KNX bus coupler and requires an external power supply. It can be integrated, parameterised and controlled in the usual way in a KNX installation.



**LUNOS GOES KNX**  
With our partner

**Arcus Electronic Design  
Services GmbH**

Rigaer Str. 88  
10247 Berlin

Phone + 49 30 259 339 14  
Fax + 49 30 259 339 15  
info@arcus-eds.de  
www.arcus-eds.de

# Inner screens

## 160 series

### Comfort inner screens

The direct sound impact on the resident is reduced - the result is a more pleasant living experience. The glass variants also impress with their elegant and modern design.



#### In plastic design

(H x W x D) 191 x 180 x 60 mm

Description: **9/IBK**



#### In plastic design

incl. F7 filter,  
increased hygiene protection  
(H x W x D) 191 x 180 x 77 mm  
Description: **9/IBK-H**



#### In glass design

(H x W x D) 197 x 185 x 66 mm

Description: **9/IBG**



#### In glass design

incl. F7 filter,  
increased hygiene protection  
(H x W x D) 197 x 185 x 83 mm  
Description: **9/IBG-H**



# Inner screens

## 160 series

### Wireless screen

Elegant design screen including wireless control and power supply for all 12V devices of the 160 series.



(H x W x D) 230 x 185 x 53 mm  
Description: **9/IBF-RF**

### Standard inner screen

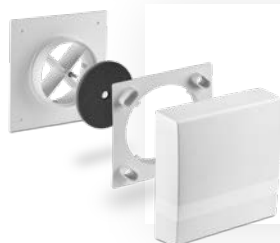
Simple screen with timeless elegance for universal use in the 160 series.



(H x W x D) 180 x 180 x 35 mm  
Description: **9/IBE**

### Sound insulation inner screen

Increase of the standard sound level difference by up to 6 dB, reduction of the inherent noise, incl. washable filters, one piece each of filter class G2 and G3



incl. G2- and G3-Filter  
(H x W x D) 250 x 250 x 78 mm  
Description: **9/IBS**



# External grille

Round & square



## Plastic grille Ø 180 mm

for round ducts Ø 160 mm  
with facade protection ring, UV-resistant  
Claw fastening and insect protection,  
Description: 1/BE 180 sanded  
Description: 1/WE 180 white  
Description: 1/AZ 180 anthracite



## Metal grille Ø 175 mm

for round ducts Ø 125 - 160 mm,  
Insect screen, pluggable  
Description: 1/RME 175 stainless steel  
Designation: 1/RMK 175 copper



## Plastic grille Ø 115 mm

for round ducts Ø 90 - 100 mm,  
UV-resistant, Insect screen,  
with claw fastening  
Description: 1/BE 115 sanded  
Description: 1/WE 115 white  
Description: 1/AZ 115 anthracite



## Metal grille □ 228 mm

for round ducts Ø 160 mm,  
Insect screen, pluggable  
Description: 1/QME 228 Stainless steel  
Designation: 1/QMK 228 copper



## Metal grille Ø 150 mm

for round ducts Ø 80 - 125 mm,  
Insect screen, pluggable  
Description: 1/RME 150 Stainless steel  
Designation: 1/RMK 150 copper





# Outer hoods

Soundproofed



## Outer hood aluminium

(H x W x D) 170 x 140 x 72 mm  
for round ducts up to  $\varnothing$  105 mm, insect screen, with sound insulation, to screw. Increase of the standard sound level difference by up to 6 dB.

Description: 1/HWE 115 white powder-coated  
Description: 1/HAZ 115 anthracite powder-coated



## Outer hood aluminium

(H x W x D) 235 x 205 x 72 mm  
for round ducts  $\varnothing$  160 mm, insect screen, with sound insulation, to screw. Increase of the standard sound level difference by up to 6 dB.

Description: 1/HWE white powder-coated  
Description: 1/HAZ anthracite powder-coated



## Outer hood stainless steel

(H x W x D) 235 x 205 x 72 mm  
for round ducts  $\varnothing$  160 mm, insect screen, with sound insulation, to screw. Increase of the standard sound level difference by up to 6 dB.

Description: 1/HES stainless steel brushed

**LUNOS**  
energy-efficient



# Outer hoods

## 160 Two-channel system



### Two-channel outer hood Aluminium

(H x W x D) 235 x 205 x 72 mm  
for round ducts Ø 160 mm, insect screen,  
with sound insulation, for screwing.  
Increase of the standard sound level  
difference by up to 6 dB.  
Description: 1/HWE-2 white  
powder-coated



new

### Universal hood

Suitable for all single- and two-channel units  
of the 160 series and Ne<sup>xt</sup>, recyclable plastic,  
(H x W x D) 235 x 213 x 74 mm, UV-resistant,  
for round ducts Ø 160 mm, insect screen,  
with sound insulation, for screwing.  
Increase of the standard sound level  
difference by up to 6 dB.  
Description: 1/KWE white



### Two-channel outer hood Aluminium

(H x W x D) 235 x 205 x 72 mm  
for round ducts Ø 160 mm, insect screen,  
with sound insulation, for screwing.  
Increase of the standard sound level  
difference by up to 6 dB.  
Description: 1/HAZ-2 anthracite  
powder-coated



new

### Universal hood

Suitable for all single- and two-channel units  
of the 160 series and Ne<sup>xt</sup>, recyclable plastic,  
(H x W x D) 235 x 213 x 74 mm, UV-resistant,  
for round ducts Ø 160 mm, insect screen,  
with sound insulation, for screwing.  
Increase of the standard sound level  
difference by up to 6 dB.  
Description: 1/KAZ anthracite



# Wall mounting

## Housings & Channels



### Wall mounting case 9/MRD

(H x W x D) 240 x 210 x 500 mm

Wall mounting case made of EPS with slope to the outside. Suitable for all round ducts of the 160 series and also usable with LUNOtherm. Can be shortened continuously.

Description: 9/MRD



### Round channel

for all devices of the 160 series and can also be used with LUNOtherm

Description: 9/R 160-500 (Ø x L) 160 x 500 mm

Description: 9/R 160-700 (Ø x L) 160 x 700 mm

# Design software

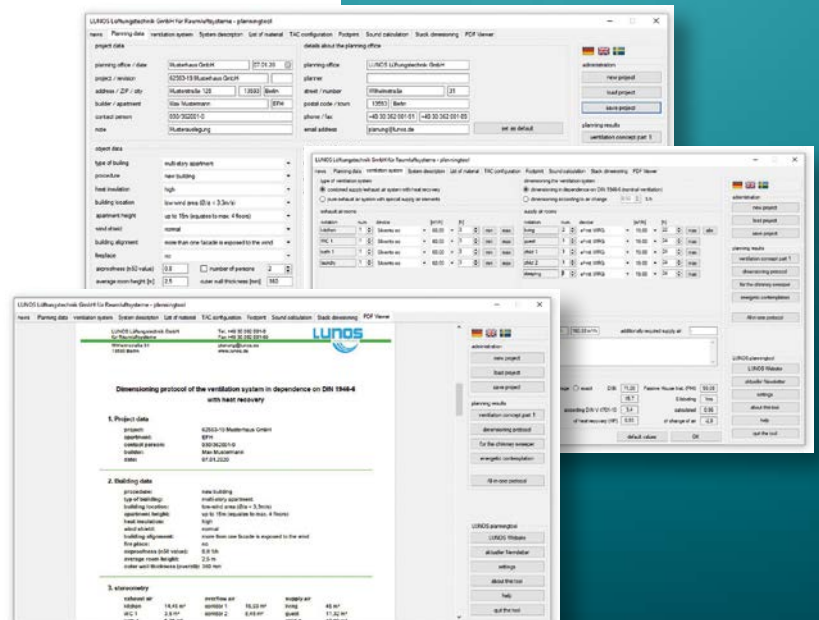
## from LUNOS

The design is based on the recognized rules of technology and meets the requirements of DIN 1946-6, which is used to determine the necessary volume flows to ensure the minimum air exchange rate for the protection of the building structure. These volume flows depend on the number of extract air rooms, the living space and the tightness, location and orientation of the building. The fan-assisted residential ventilation is designed according to the nominal ventilation stage, which covers the required air exchange rate during normal use.



### Design tool based on the specifications of DIN 1946-6

- » Proof of the necessity of ventilation measures (ventilation concept part 1)
- » Design related to exhaust air spaces or useful area
- » Design of the fresh air volume flows
- » Calculation for moisture protection, reduced ventilation, nominal and intensive ventilation
- » Calculation of the infiltration volume flows
- » Component design of the ventilation system such as fans, external wall air diffusers and overflow cross sections
- » Consideration of the requirements for exhaust air systems in connection with fireplaces
- » Calculation of efficiency and effectiveness of the planned ventilation system
- » Creation of complete material lists
- » Calculation of the sound insulation of an exterior wall in combination with ventilation components
- » All calculation results are output by the design tool in clear reports in PDF format incl. placement of the components in the floor plan



# Diagnostic software

from LUNOS

LUNOS fans can be quickly and flexibly adapted on site to the planning/design and individual requirements.

For this purpose, most LUNOS controllers and devices have a diagnostic interface that provides limited access to the firmware and allows extended configuration and calibration via LUNOS' own software.

The operating data of the fan can also be read out via the same interface. This allows you to perform comprehensive diagnostics and troubleshooting on site. With an existing Internet connection, it is also possible to analyse the data remotely together with LUNOS customer support.

## Diagnostic tool based on the specifications of DIN 1946-6

- » Advanced configuration and calibration
- » Production data acquisition and analysis
- » Operating hours, motor running time, filter service life, sensor data, and switching operations, control priorities, activated ventilation stages, occurring back pressures
- » With an existing Internet connection, the data can be analyzed remotely together with LUNOS customer support.





# REFERENCES

Examples of energy-efficient ventilation

# Low-energy house Clane

Kildare, Ireland



## RENOVATION

**Building type** Renovation of a farmhouse from the 18th century with the addition of a modern building complex to create a low-energy house

**Building owner** Jordan family, Kildare - Ireland

**Ventilation concept** Controlled home ventilation with heat recovery

**Supply and exhaust air** Living spaces: e<sup>2</sup> with heat recovery  
Function rooms: e<sup>90</sup> with heat recovery

**Completion** Spring 2017

**Energy standard** Low-energy house with a decentralised ventilation system with heat recovery, air heat pump with separate split evaporator and sufficiently dimensioned separate storage tank, high thermal insulation and triple thermal insulation glazing.



# References

## New building



### NEW BUILDING Plus-Energy-Project Powerhouse, Berlin

<b>Building type</b>	New construction of an innovative plus-energy project with 128 two- to four-room apartments spread over five buildings.
<b>Building owner</b>	HOWOGE housing association, Berlin
<b>Ventilation concept</b>	Controlled home ventilation with heat recovery in a decentralised hybrid system with exhaust air fans in the functional rooms
<b>Supply and exhaust air</b>	Living spaces: e <sup>2</sup> with heat recovery
<b>Exhaust air</b>	Exhaust air units of the Silvento-ec series are installed in the functional rooms.
<b>Completion</b>	Late summer 2017
<b>Energy standard</b>	Plus Energy House Standard: Holistic energy concept with solar thermal system, which in combination with the district heating network enables a balanced heat supply. Supplemented by photovoltaic system, hybrid ventilation system with heat recovery and high thermal insulation.



### NEW BUILDING Multi-family house, Berlin

<b>Building type</b>	New construction of an apartment building with tenants' meeting place
<b>Building owner</b>	Märkische Scholle Wohnungsunternehmen eG, Berlin
<b>Ventilation concept</b>	Controlled home ventilation with heat recovery in a decentralised hybrid system
<b>Supply and exhaust air</b>	e <sup>2</sup> with heat recovery and facade-side closure via the facade element LUNOthem
<b>Exhaust air</b>	Exhaust air units of the Silvento UP series are installed in the functional rooms.
<b>Completion</b>	2013
<b>Energy standard</b>	KfW-55 standard: high thermal insulation (200 mm), triple-glazed windows, hybrid ventilation system with heat recovery, Heating and hot water production in the system.



# References

## Renovation



### RENOVATION

#### Plus-Energy-MFH, Bern, Switzerland

<b>Building type</b>	An apartment building from the 1950s is turned into a small power station. According to data from the cantonal building programme in Switzerland, the building is the first in the city of Bern to meet the highest energy requirements. Multi-family house with five family apartments and two penthouse apartments.
<b>Building owner</b>	Quadrat AG, Zollikofen
<b>Ventilation concept</b>	Controlled home ventilation with heat recovery in a decentralised system
<b>Supply and exhaust air</b>	Living spaces: e <sup>2</sup> with heat recovery Function rooms: e <sup>90</sup> with heat recovery
<b>Completion</b>	May 2014
<b>Energy standard</b>	Plus Energy House of GEAK category AA (GEAK=Building Energy Performance Certificate of the cantons, comparable to Dena Energy Performance Certificate): triple-glazed windows, ventilation system with heat recovery, solar thermal system and photovoltaic system with an electricity surplus of 7 %.



### RENOVATION

#### Container-Project Ripple, Dublin, Ireland

<b>Building type</b>	Conversion of an overseas container as an apartment to use the St. Vincent de Paul church as a shelter for the homeless. Completion was achieved in just three days as part of the Ripple Container Homes project. The container home offers six sleeping places, a bathroom unit, kitchen, living room and an outdoor terrace.
<b>Building owner</b>	RIPPLE Container Build Team
<b>Ventilation concept</b>	Controlled home ventilation with heat recovery
<b>Supply and exhaust air</b>	Living spaces: e <sup>2</sup> with heat recovery Function rooms: e <sup>90</sup> with heat recovery
<b>Completion</b>	November 2014
<b>Energy standard</b>	High thermal insulation, ventilation system with heat recovery and solar thermal system.

# Representatives

Germany



- Baden-Württemberg
- Bavaria
- Berlin, Brandenburg
- Franconia
- Hamburg, Schleswig-Holstein
- Hesse, Western Franconia, North Baden
- Lower Saxony, northern North Rhine-Westphalia
- Mecklenburg-Western Pomerania
- Rhineland-Palatinate, Saarland
- Saxony
- Saxony-Anhalt
- Southern North Rhine-Westphalia
- Thuringia

# Representatives

International



- Australia
- Austria
- Canada
- Chile
- China
- Cyprus
- Czech Republic
- Denmark
- Great Britain
- Greece
- India
- Ireland
- Italy
- Latvia
- Lithuania
- Malta
- Netherlands
- New Zealand
- Norway
- Poland
- Portugal
- Romania
- Switzerland
- Slovakia
- South Korea
- Spain
- Thailand
- USA

**LUNOS Lüftungstechnik GmbH & Co. KG**  
**für Raumlufsysteme**

Wilhelmstraße 31 · 13593 Berlin

PO Box 20 04 54 · 13514 Berlin

Phone +49 30 362001-0

Fax +49 30 362001-89

info@lunos.de

www.lunos.de



**WWW.LUNOS.DE**